

Safety Certification Unit for Small Arms Brass



Model #18860

Patent Pending



BOULDINCORP™
Demilitarization
Equipment

BouldinCorp
Demilitarization Equipment
P. O. Box 7116
McMinnville, TN 37111-7116

Toll Free: (800) 443-6398
Phone: (931) 815-8520
Fax: (931) 815-2741
www.bouldincorp.com
E-mail: info@bouldincorp.com

This machine is designed to destroy the volatility of powder charges and primers associated with live ammunition which becomes inadvertently commingled with a supply of small arms spent shell casings.

Reduces the Risks of Live Ammunition

This proprietary system efficiently transforms the live ammunition back into its individual solid metallic components thus decontaminating material to a 5X Level thereby rendering the brass inert and releasable to the general public.

GSA Contract:
GS-07F-5703P

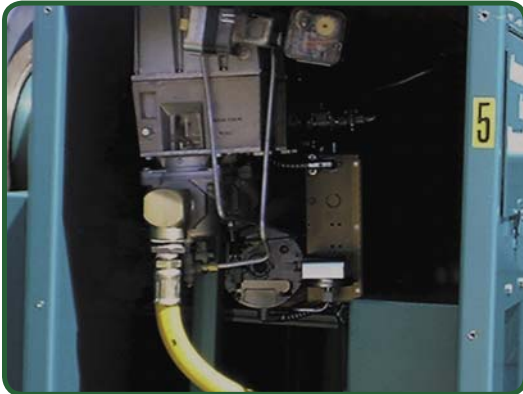


8' x 26' Trailer:

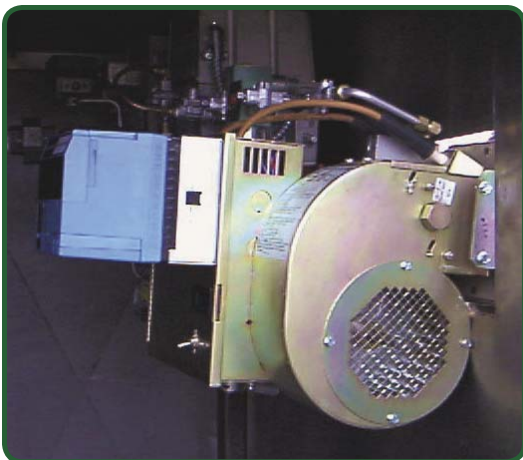
Electric break-away safety system, marker lights, turn signals, & brake lights. Unit is permanently mounted to dual axle trailer. DOT approved for highway use.



Propane Genset:
 Electric Start, Easy Operation and Maintenance,
 Provides Power to Conveyors and Burners



Burner Control:
 Easy Operating Propane Valve, Manual Reset
 Switch, Regulators and Connection Hose Provided



Retort Chamber Burner:
 Propane Fueled, Low Emissions, Efficient,
 Trouble-Free Operation and Maintenance

THE SAFETY CERTIFICATION UNIT PROCESS

The Safety Certification Unit for Small Arms Brass consists of an in-feed conveyor with a hopper, propane burner, heating chamber, discharge conveyor and a propane generator.

Expanded brass casings are loaded into the hopper on the in-feed conveyor and carried to the heating chamber where they will travel toward the discharge end while being processed.

The brass only stays in the heating chamber around 30 seconds before being released onto the out-feed conveyor which carries it upward and discharges at a 5' dump height.

- Controls:**
- Power Switch Keyed Start
 - Generator Keyed Start
 - Out - Feed Conveyor On/ Off
 - In-Feed Conveyor On/ Off
 - Agitator On/ Off
 - Blower On/ Off
 - Propane Burner Reset
- Emergency Stops:**
- Control Panel
 - Out-Feed Conveyor



Specifications:

• Total Unit Weight	6,580 lbs.
• Dimensions	8' wide, 26' long
• Processing Rate	1,000 - 2,000 lbs./hr*
• Max. Caliber	up to 50 Cal.
• Operating Temp.	800° F
• Process Time	30 Seconds
• Generator	110 V/ Single Phase
• Fuel	Propane
• In-Feed Conveyor	14" x 8' Chain & Flight
• Out-Feed Conveyor	14" x 8' Enclosed Chain & Flight
• Motors	3/4 HP / 110V / Single Phase

* Processing Rate is dependent on caliber of arms being processed



BOULDINCORP™

Proudly Designed
 and Manufactured
 in America

